

The background of the image is a large, empty auditorium or lecture hall. The seats are arranged in rows and are a variety of colors including red, blue, green, grey, and brown. The perspective is from the back of the room, looking forward. The text is centered over the middle of the image.

Fall Seminar 2023

Grade 9

International Baccalaureate Program
Palm Harbor University High School



Please
welcome
Addy Reese



IB Mission Statement of Palm Harbor University High School

To develop inquiring, knowledgeable and caring young people who help to create a better and more peaceful world through intercultural understanding and respect.

As IB students and faculty we encourage one another to become active, compassionate, and lifelong learners who understand that other people, with their differences, can also be right.

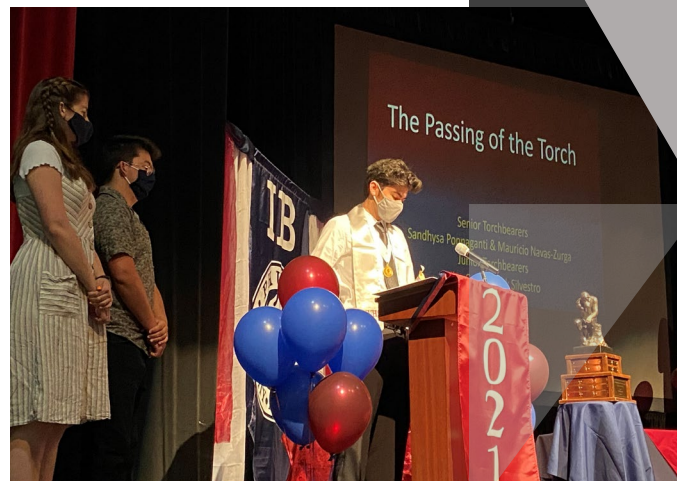




November IB Learner Profile Leaders

- Risk Takers: These students were nominated by their peers and IB faculty for approaching uncertainty with forethought and determination and working independently and cooperatively to explore new ideas and innovative strategies, and for being resourceful and resilient in the face of challenges and change.
- Grade 9 Luke Leininger
- Grade 10 Arsh Shah
- Grade 11 Oskar Delega
- Grade 12 Nick Silvestro and Krishni

Diploma Years first annual "Friendsgiving"



Senior IB
Planning
Ceremony
-2022



Our IB Boosters

- Please welcome one of your IB Boosters, to share how you can become involved to support the wonderful events we have for our students and faculty.

A large orange circle is positioned on the left side of the slide, partially overlapping the text area.

Research from the IB


84.6% of all DP candidates enrolled in university immediately after high school compared to the national average of 66%

*99% at PHUHS IB (85% PHUHS IB attend a Florida College)

A greater percentage of DP candidates enrolled in more selective institutions

90.4% of DP candidates who enrolled in a four-year postsecondary institution immediately after high school were enrolled in the same institution the following year and 66.5% graduated within 4 years compared to the national average of 41.4%

**Our students are persistent,
prepared, and proficient!**



More IB Research about the Benefits of the IB Core (TOK, CAS, EE)

Significantly greater likelihood of using a range of critical-thinking skills

Students felt prepared for university coursework involving research; intended to conduct future research; and found that their research skills to be important to future success;

Students developed an ethic of service; became more caring, open-minded, and reflective; and developed more self-confidence and maturity

DP students scored higher on 9 out of 10 items that tested their knowledge of US government structure, functioning and history.

College Data from the Florida Association of IB Schools:
Preliminary results of an ongoing initial survey of over 2,000 IB students in the state of Florida shows IB student acceptance rates continue to outpace the overall acceptance rates

University	IB Student Acceptance	Overall Acceptance
University of Florida	59%	30%
Florida State University	78%	37%
University of Central Florida	90%	36%
Princeton	5%	4%
Brown	11%	6%
University of California, Berkley	34%	15%
University of California, Los Angeles	27%	11%
New York University	20%	13%
University of Michigan	40%	20%
Duke	12%	6%
University of Pennsylvania	10%	6%
Yale	8%	5%
University of Virginia	35%	21%



IB Diploma

The diagram consists of two teal circles connected by an equals sign. The left circle contains the text 'IB Diploma'. The right circle contains the text 'Bright Futures Academic Scholarship'. The equals sign is represented by two horizontal teal bars.

Bright
Futures
Academic
Scholarship



Just a few PHUHS IB Highlights

- Consistently surpass the percent of International Diplomas earned
- 82-94% diploma rate over the last 5 years
- 90-96% of students earned a 4-7 on their exams over the last 5 years
- IB students outscore Florida and National SAT scores for Reading by over 100 points and ACT by 7 points
- PHUHS IB students represent the majority of our county's National Merit scholars annually
- Over 95% of our students earn Bright Futures Scholarships
- PHUHS IB students are recognized consistently for their work in the community.

Where are our PHUHS IB alumni?

Class of 20221	Class of 2022	Class of 2023
Boston University Case Western Reserve University Cornell University Flordia Atlantic University Florida State University Georgia Institute of Technology John Hopkins University Massachusetts Institute of Technology Nova Southeastern University Rice University University of California, Berkley United States Marines United States Military Academy, West Point University of Florida University of Central Florida University of Notre Dame University of Southern Florida Vanderbilt University	Auburn University Bernard M. Baruch College Carnegie Mellon University Colorado State University Cornell University Florida Polytechnic University Florida State University Georgia Institute of Technology Massachusetts Institute of Technology Rensselaer Polytechnic Institute Rollins College University of Alabama University of Central Florida University of Florida University of Miami University of Notre Dame University of Pennsylvania University of Southern Florida University of Virgina	Australian National University Cornell University Florida State University George Washington University Georgia Institute of Technology Indiana University Massachusetts Institute of Technology McGill University Ringling School of Art and Design Saint Leo University Tulane University University of Central Florida University of Northern Florida University of Florida University of Florida at Santa Fe University of Southern Florida

Grade Level Seminars



How we approach Teaching & Learning in IB



How can you support the IB Approach to Teaching and Learning?

Where & How does your student study?

- Do they plan breaks?
- Do they change the type of homework/studying every 45 minutes to switch their brain's gears?
- Location matters: think noise, brain association, distractions

How do they organize their time?

- Planners
- Making time for joy
- Focusing on A day A night, B day B night, C day C night

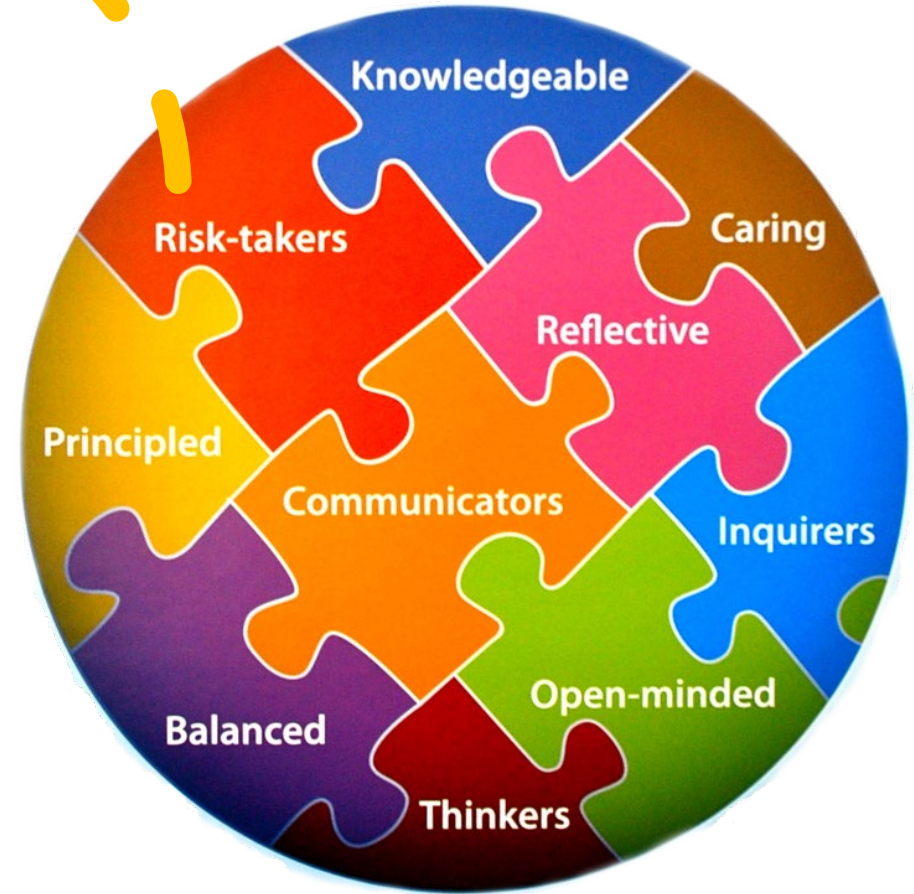
Self-Advocacy

- Ask your teachers for help; they are there to support you, but they need to when you need their help, including when you're just struggling with life stuff!
- Attend available tutoring times

The IB Core is gradually introduced to our Pre-IB students through the common planning of their teachers and staff and through the skills taught in Inquiry Skills

- CAS
- TOK
- EE

These are an integrated whole in developing ourselves with the attributes of the IB Learner Profile



The IB Core – CAS

Students WILL earn their Bright Futures service requirements in CAS during their Junior and Senior years

Creativity-
Activity-Service

Divided among
the three areas

Planned
(approved)

Activities carried
out continuously
over time

Documented;
evidenced

Signed off by an
objective adult
supervisor

Required
interviews and
reflection

Final review by
IB CAS
Coordinator

The IB Core - TOK

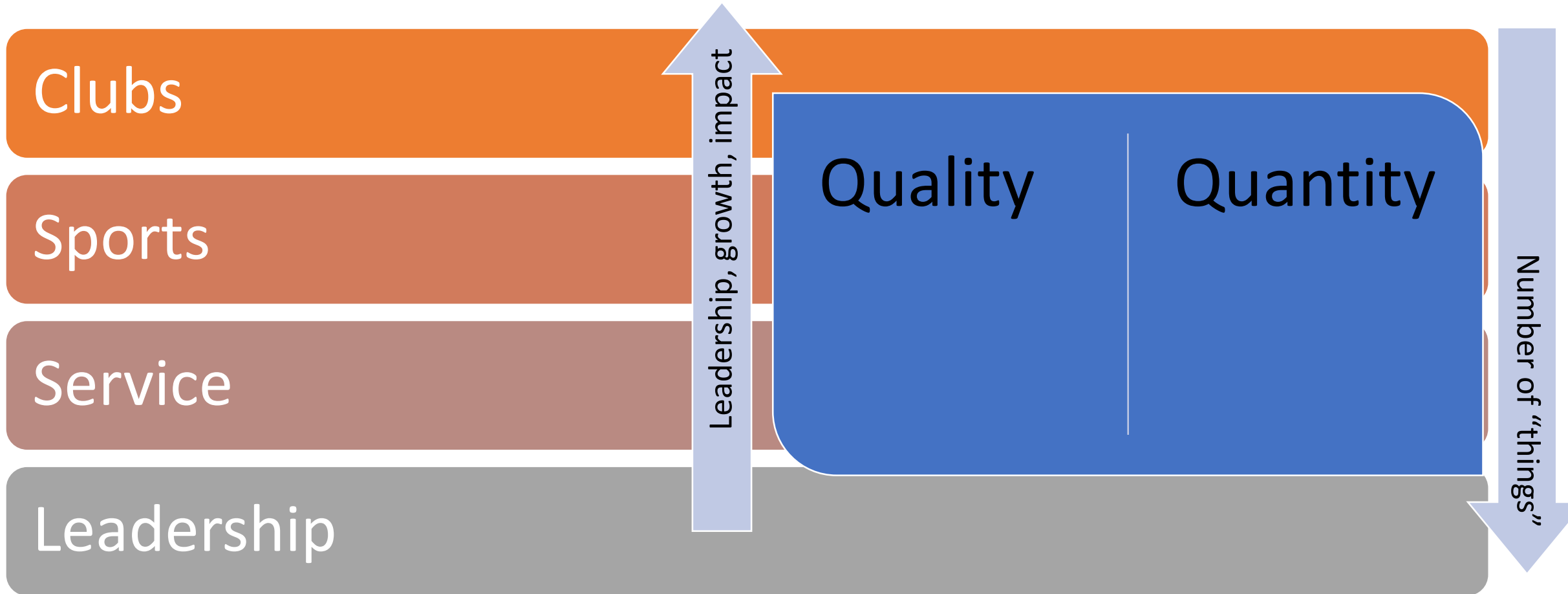
TOK Exhibition – assesses the ability of the student to show how TOK manifests in the world around us. Completed in Junior year.

TOK Essay – examines one of the areas of knowledge. Completed in Senior year

TOK assessments are neither an essay nor a report on a topic. Students must deeply examine the “Knowledge Questions.”

Start Preparing for CAS...

How is your student getting involved?





5 Main Projects in 9th grade

Practicing ATL Skills

- **Gading Period 1**
 - Global issue Presentation
- **Grading Period 2**
 - Mini EE on History or Literature Focus
- **Grading Period 3**
 - Exploration of Math **and** Science EE writing
- **Grading Period 4**
 - Debates

The IB Core –
Pre-IB
Students will
engage in
writing
1 mini EE

RESEARCH
INVESTIGATION
ACADEMIC INQUIRY

Reasoned examination of an intellectual nature in which established sources of academic merit are assessed and applied in the creation of authentic writing

Consideration of different styles of writing for different subject areas



The aims of the mini-extended essay are for students to:



engage in independent research with intellectual initiative and rigour




develop research, thinking, self-management and communication skills



reflect on what has been learned throughout the research and writing process.

(Source: IBO, Extended Essay Guide First Examinations 2018)



What does this translate into?

The IB Research about the IB Core

Significantly greater likelihood of using a range of critical-thinking skills

Students felt prepared for university coursework involving research; intended to conduct future research; and found that their research skills to be important to future success;

Students developed an ethic of service; became more caring, open-minded, and reflective; and developed more self-confidence and maturity

DP students scored higher on 9 out of 10 items that tested their knowledge of US government structure, functioning and history.

PSAT

Why Take the PSAT/NMSQT?

See your progress over every PSAT you have taken and track your improvement.

Your **SCORE REPORT** will give details on each question and answer. Show how you did, give the right and wrong answers and why.

The **SCORE REPORT** will also provide insight into strengths and weaknesses.

CAREERS: Explore careers that you're passionate about on BigFuture by taking the Career Quiz and learning how your test performance aligns to 1,000 occupations with our career readiness indicator.

COLLEGES: Search over 3,000 college profiles on BigFuture to discover which colleges and programs are right for you. Filter by location, major, and more.

SCHOLARSHIPS: Use your scores to access scholarships from BigFuture Scholarships, and thousands of others.

SAT PRACTICE: Send your scores to Khan Academy® for a free, personalized SAT practice plan based on your test results.

AP POTENTIAL: See which courses are offered at your school and which classes match a future major that may interest you.

Preparing for the NMSQT National Merit Scholarship Qualifying Test

```
graph LR; A((October 3rd and 4th)) --> B((Qualifies you for scholarships and recognition for college applications in junior year))
```

October 3rd
and 4th

Qualifies you
for scholarships
and recognition
for college
applications in
junior year

BRIGHT FUTURE SCHOLARSHIPS

FLORIDA ACADEMIC SCHOLARSHIP

- 3.5 GPA
- 29 ACT
- 1340 SAT
- 100 Hours

FLORIDA MEDIALLION SCHOLARSHIP

- 3.0 GPA
- 25 ACT
- 1210 SAT
- 75 hours



IB Diploma



Bright
Futures
Academic
Scholarship

Florida Bright Futures Scholarship Program

Parent and Student Quick Start Guide

Ensuring student compliance for Florida Bright Future Volunteer & Work Hours



STEP 1: Sign Into Your Account at profferfish.com

Select **LOG IN** from top navigation bar *(Important Note: Students and Parents use the Same Account)*

- If your school uses ClassLink or Clever, click on that link to access your account **or**
- Select **"Don't Have an Account? Sign Up"** *(Student name MUST match your Emergency Information Card)*

STEP 2: Discover Volunteer and Work Organizations & Opportunities

Pre-Approved Volunteer & Business Organizations

If an **organization** is pre-approved, you will find it here!
If not listed, you will need to submit for approval.

Pre-Approved Volunteer & Work Opportunities

If an **opportunity** is pre-approved, you will find it here!
If not, you will need to submit it for approval.

Submit a NEW Organization or Opportunity

If an Organization OR Opportunity is not on a pre-approved list, click here to submit it for approval.

STEP 3: Get your Volunteer OR Work HOURS Approved



CONGRATULATIONS!

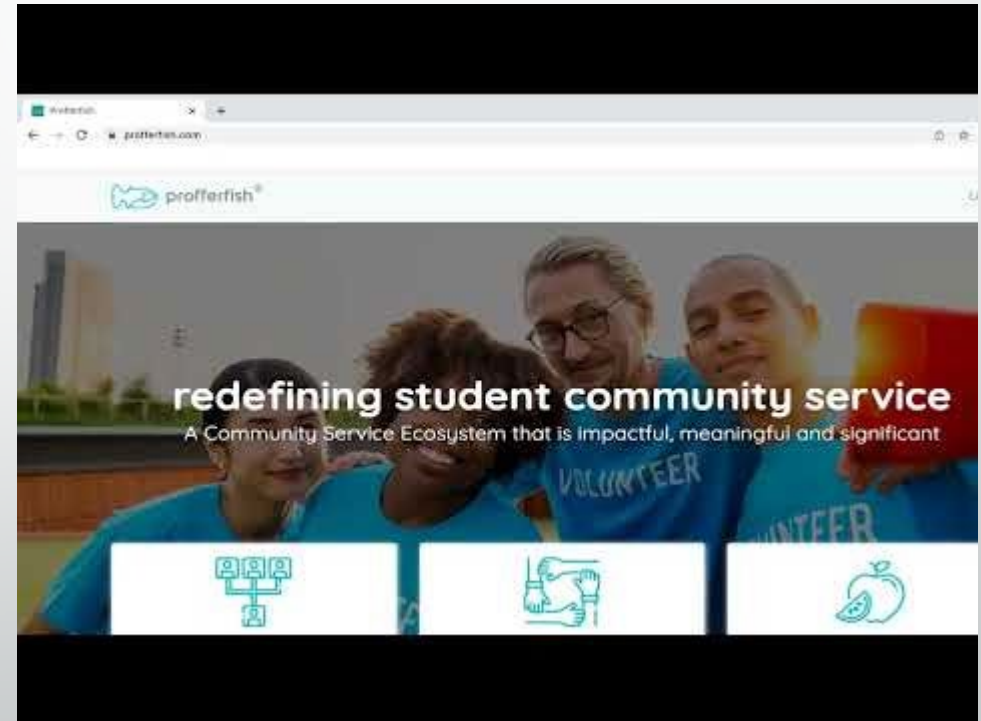
Empowering Students to Discover, Learn, & Lead
Through Community Involvement

Profferfish: How to videos

Introduction to Profferfish



How to activate your student account



More Profferfish How to videos

How to submit your hours



How to submit a new volunteer organization or business



Start Researching Colleges and Careers Now



Visit local colleges



Go online to check out colleges in subjects you're interested in and locations you'd love



Go to the virtual and in person College Fairs in the community



Talk to teachers, family friends, mentors about their careers and colleges they attended

NAVIANCE!

Florida Shines - www.floridashines.org

Big Future Collegeboard -
www.bigfuture.collegeboard.org

eCampus Tours - ecampustours.com

Admittedly - admitted.ly

Cappex - cappex.com

Chegg - chegg.com

College Raptor- collegeraptor.com

- ✓ Is this college a good fit for me?
 - ✓ Do they have my major?
 - ✓ SAT?
 - ✓ ACT?
 - ✓ GPA?
 - ✓ LOCATION?
 - ✓ Is the price tag realistic?
 - ✓ What is their 4 year graduation rate?
 - ✓ What is their avg freshman retention rate?
 - ✓ Are there options for study abroad?
 - ✓ Are their students employed upon graduation?

College
Research -
Where do
They want
to go?



Naviance is a customizable planning portal for students and families including self-discovery assessments, goal-setting, college research tools, and career exploration resources.

On Naviance, you can take a career interest inventory, complete a resume, search for colleges and explore a variety of post-secondary options.

Introductory Naviance video: <https://www.screencast.com/t/tbcYt9eUkKg>

Logging into Naviance

- Log into [Clever](#) and select the Naviance icon. You can also type "Naviance" into the search bar.
- Once you are in Naviance, scroll down to see your "Important To Dos and Tasks" and begin working on those. You can also click on "Planner" in the top tool bar and select "Tasks" to see what is required for you to work on.

Search for Best Fit Colleges using SuperMatch

Request Counselor Recommendations/School Report

Request Transcripts

Request Letters of Recommendations from Instructors

Track application documents for all applications

We will work on Connecting Common App and Naviance next period

Naviance

SEPTEMBER COLLEGE VISITS

University of Chicago

- Thursday, September 7th
- 2nd lunch in the TA

Valdosta State University

- Thursday, September 14th
- Both lunches in the TA

Troy University

- Monday, September 18th
- 1st lunch in the TA

University of Miami

- Tuesday, September 19th
- 1st lunch in the TA



October College Visits

- Tuesday, October 3rd – University of Florida – 2nd lunch in the TA
- Wednesday, October 4 – Emory University – 2nd lunch in the TA
- Thursday, October 5th - University of Alabama Birmingham – 2nd lunch in the TA
- Friday, October 6th - American University – 2nd lunch in the TA
- Friday, October 13th – Furman University – 2nd lunch in the TA
- Tuesday, October 17th – University of Colorado – both lunches in the TA

SAT –
collegeboard.org

2 sections

Critical Reading &
Writing

Math

Scoring - range 200-800

- 800 max
- total is 1600

Fee Waiver

Superscoring

ACT –
act.org

4 sections

English, Math,
Reading, Science

Scoring - Range
1-36
Each section gets
scored

Composite = all
sections averaged
together

Super scoring

Fee Waiver

**Coffee or Tea
with
Mrs. S-T**

**Senior Parents –
Friday, September 22
7:30-8:15 am**

**Freshman - Junior Parents –
Friday, September 29
7:30-8:15 am**





Freshman – Junior Parent Topics

- What to expect in IB
- How to help them have a successful year
- **BALANCE**
 - Study
 - Activities
 - Sleep
- Q&A
- <https://forms.office.com/r/b7DpH9NftT>

Freshman - Junior Parents –
Friday, September 29
7:30-8:15 am

Coffee or Tea with Mrs. S-T

Next meeting dates are
for parents of all grade
levels

- December 1st – 7:30 – 8:15 am
- February 9th – 7:30 – 8:15 am
- April 19th – 7:30 – 8:15 am



Advanced Placement Support

- AP Classroom
- Log in with College Board Account
- Daily Videos
- Unit Progress Checks

Q1: Diminished Stimulus Sensitivity

Unit 3 Progress Check: MCQ

1 2 3 4 5 6 7 8 9 10 11 12 13 14 1 of 21

stimulus?

(A) Perceptual set

(B) Difference threshold

(C) Absolute threshold

(D) Transduction

(E) Sensory adaptation ✓

Item Details

Stimulus Type: Text
Question Type: MCQ

Unit And Topic

3: Sensation and Perception
• 3.1: Principles of Sensation

Skill Category And Skill

Skill Category 1: Define, explain, and apply concepts, behavior, theories, and perspectives.
• Skill 1.A: Define and/or apply concepts.

Additional Alignments

Question Set: No

AP

3.1: DAILY VIDEO 1 This video is visible to all students on their homepage.

28% Watched ✓ Assigned

TOPIC 3.1

Principles of Sensation

AP Psychology

DAILY VIDEO 1

Advanced Placement Support

- AlbertIO
- Log in via Clever
- Organized by unit
- Teacher assigned work or student independent practice
- Explanation of correct answers
- Explanation of distractors

This viewpoint probably comes from somebody who believes in what historical theoretical approach?

A Structuralism.

B Functionalism. 

C Gestalt.

D Dualism.

E Psychoanalysis.

✓ No answer was submitted for this question.

Explanation

Choice 'B', functionalism, is correct.

This approach, popular in the 1880s through the early 1900s, felt that it was next to impossible to really capture what people were thinking, feeling, or sensing because consciousness was a steady stream, not a collection of individual thoughts. They were also inspired by the ideas of evolution, which suggested that all behavior has a purpose.

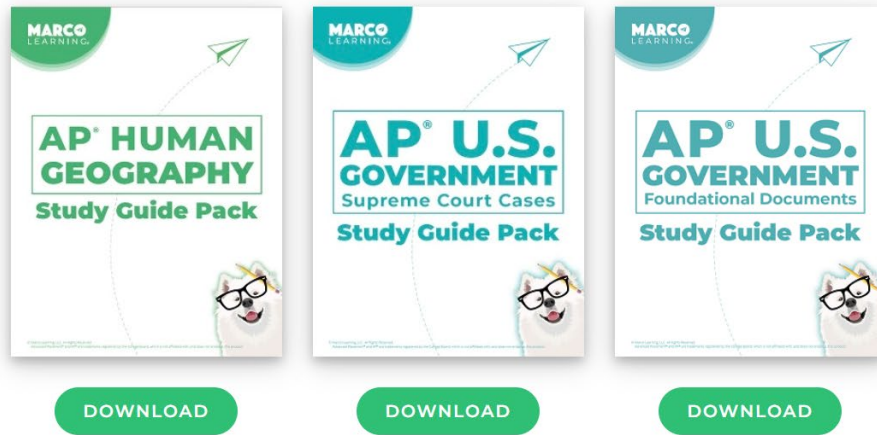
Explanation of Distractors

The most direct opposite is Choice 'A', structuralism, which does want to understand what thoughts are "made of". If a functionalist was studying cars, she would focus on driving them, while a structuralist would take them apart.

Choice 'C', gestalt psych, was a German approach that looked at how the mind pulled together pieces of information into a whole. Choice 'D', dualism, is a philosophic position that the body and mind are separate things.

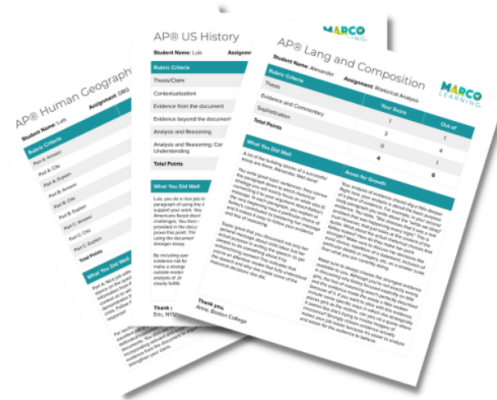
Psychoanalysis, Choice 'E', is Freud's general approach of looking for unconscious motivations to explain and help an individual.

Free study guides and study guide packs for AP[®] Human Geography and AP[®] U.S. Government. Study guide packs include multiple study guides covering key content areas of the AP[®] HUG and AP[®] Gov Exams.



What Students Get

- **Individualized Feedback**
Personalized, hand-crafted reports designed to encourage students and help them improve
- **Inline Comments**
Detailed inline comments that highlight specific areas for revision



Click the thumbnail to view a sample report

Advanced Placement Support

- Marco Learning
- Free downloadable study packs
- Teacher assigned writing assignments with rubrics
- Student writing support (Individualized Feedback & Inline Comments)

https://www.pcsb.org/Page/39035

ue... Absolute Family Car... the EdFly - Mrs. Stavropoulos'... Mail - Evette J. Strib... UF MyUfl UF UF course page rwt Homepage - Rea

y Schools Translate

Palm Harbor University High
Home of the Hurricanes

Newsroom Calendar Contact

Stu

about Us Academics **Programs** Clubs and Activities Resources Get Engaged Athletics Calendar

International
ate Programme

ie

Sunday	Monday	Tuesday	Wednesday	Thursday	Friday	Saturday
August 2023						
			2 Pre-school	3 Pre-school	4 DWT Pre-school	5

://www.pcsb.org/Page/39035

Kahoot! - Create ne... Absolute Family Car... the EdFly - Mrs. Stavropoulos'... M

Home About Us Academics **Programs** Clubs and Activities

Discovery Night & Shadowing Information

IB Weekly Family Communication

IB Faculty

Fall Seminar

IB Learner Profile

ABC Calendar

IB Student Testimonials

IB in the News

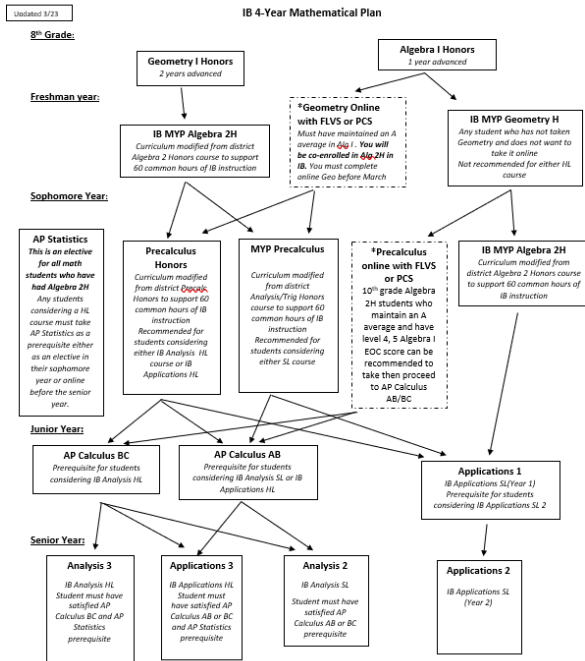
PHUHS Programs

C.W.M.P - Center for Wellness & Medical Professions

I.B. - International Baccalaureate Programme

C.A.B.A.M. - Career Academy of Business Administration & Management

Important Dates: Check Website ABC Calendar



*If you are interested in advancing your mathematical pathway the IB Programme offers several places for that to

IB Course Progression (handouts provided)

IB COURSE PROGRESSION				
	Grade 9	Grade 10	Grade 11	Grade 12
Language A (English)	English I Pre-Diploma	AP English Language	AP English Literature/Composition (SL/HL)	IB English Lit 4 (SL/HL)
Language B (Spanish/French)	Level 1/2 Pre-Diploma	Level 2/3 Pre-Diploma	IB Level 4 (SL/HL)	IB Level 5 (SL) IB Level 6 (HL)
Individuals & Societies (Social Studies)	AP World History	AP U.S. History	IB History of The Americas 1 (SL) Completed in 1 year** -or- IB History of The Americas 2 (HL)	IB Contemporary History 2 (HL)
Experimental Sciences	Biology 1 Pre-Diploma	Chemistry 1 Pre-Diploma	Biology 1 IB (SL) AP Biology (HL) and/or AP Chemistry (SL/HL) and/or Physics 1 IB (SL/HL)	Biology 2 IB (SL) Biology 3 IB (HL) and/or Chemistry 2 IB (SL) Chemistry 3 IB (HL) and/or Physics 2 IB (SL) Physics 3 IB (HL)
Mathematics	Algebra 2 Honors (MYP) -OR- Geometry Honors	MYP Geometry Honors -or- Geometry Honors -or- Pre-Calculus Honors	IB Applications and Interpretations 1 (SL) -or- AP Calculus AB (SL) -or- AP Calculus BC (HL)	IB Applications and Interpretations 2 (SL) -or- IB Analysis and Approaches 2 (SL) -or- IB Applications and Interpretations 3 (HL) -or- IB Analysis and Approaches 3 (HL)
Sixth IB Subject	Inquiry Skills Pre-Diploma	Traditional Elective -or- Physics 1 Honors (selected by 50% of our sophomores)	AP Psychology (SL/HL) -or- IB Theatre I (SL/HL) -or- IB Music (SL/HL) -or- IB Art I (SL/HL) -or- 2nd IB Science (SL/HL) -or- 2nd IB Language B (SL/HL)	IB Psychology 2/3 (SL/HL) -or- IB Theatre II (SL) IB Theatre III (HL) -or- IB Music II (SL) IB Music III (HL) -or- IB Art II (SL) IB Art III (HL) -or- 2nd IB Science (SL/HL) -or- 2nd IB Language B (SL/HL)
Seventh Subject	Traditional Elective	Traditional Elective	IB Theory of Knowledge 1	IB Theory of Knowledge 2

**Students whom completed the SL History in 1 year, have an additional choice to complete an 8th Subject: SL IB Film, SL IB Sports Exercise Science, SL IB Music, SL IB Theatre, complete an AP course, or General elective course.

IB, GPA, and College Course Credits



Students typically earn up to 45 college credits (Florida University System)



All Junior and Senior courses are IB courses—college level



All Freshman and Sophomore courses are Honors or AP level



Students may take Dual Enrollment and additional Honors, AP, etc. courses during the summer




Students may participate in executive internships during the summer after their Junior year



The majority of Universities accept IB credits in some way—see our website to learn more

IB	AP	DE	Benefits
Full Course Meal	Buffet	Home cooked meal	AP <ol style="list-style-type: none"> 1. Pick and choose 2. College Level Course with GPA advantage 3. Nationally recognized 4. Teachers trained by College Board
Curriculum set, monitored, & assessed by The International Baccalaureate Organization (IBO)	Curriculum set, monitored, & assessed by College Board	Curriculum set by local Junior College	IB <ol style="list-style-type: none"> 1. Internationally recognized 2. Interdisciplinary instruction between teacher teams/subjects 3. AP/IB teacher planning through District and site based teacher teams 4. Includes research opportunities highly recognized by colleges through internal assessments and extended essay in the Junior and Senior years 5. Teachers trained by IBO, most also trained by College Board 6. Students are in ALL Honors, AP, and IB level courses through 9-12 impacting their knowledge built and GPA
IB Programme Includes AP courses in progression and ability to take DE during summer	Individual Courses	Individual Courses	
Opportunity to earn college credit for IB courses based on exam (1.0 GPA weight based on grade), Honors credit for Pre-IB (.5 GPA weight based on grade)	Opportunity to earn college credit (based on exam) per course and 1.0 GPA weight (based on grade)	Opportunity to earn college credit based on grade and 1.0 GPA weight	DE <ol style="list-style-type: none"> 1. College Credit and GPA advantage 2. College Credits & GPA advantage 3. College Transcript Begun



Please
Welcome our
AMAZING IB DP
Student Panel

